

IRONMAN 4x4
CROSS 1200 ANNEXE

IRTTANNEX012

**Cross 1200
Annexe
Owner's Manual**



IMPORTANT: Please read all procedures and precautions before using this Ironman 4x4 Product.
If you have any questions please contact our customer service department.

Safety Warnings

CROSS 1200 ROOFTOP TENT ANNEXE

Congratulations on your purchase of the Ironman 4x4 Cross 1200 Rooftop Tent Annexe.

Your annexe is designed to be mounted directly to your Cross 1200 rooftop tent and can be set up in just a few minutes.

The Ironman 4x4 Cross 1200 annexe is made using the best possible materials and construction methods, providing excellent protection from the elements. All of the components have been pre-assembled in our factory, making installation a simple process.

WARNING

Incorrect installation or use of your Cross 1200 rooftop tent and annexe could result in serious injury or death. Please follow these instructions carefully to ensure proper installation on your vehicle and correct operation.

We recommend contacting your vehicle or accessory manufacturer for specified load capacity of your roof and roof rack. Not all factory or aftermarket roof racks or bars can safely accommodate all rooftop accessory additions.

Accessory inclusions such as rooftop tents can change normal vehicle handling. Ironman 4x4 disclaims all responsibility in case of accident due to incorrect installation, improper use or maintenance and infrequent review of fasteners tensions.

We recommend that you **DO NOT** exceed 110kmh (70mph) when your rooftop tent is installed and always adhere to speed limits.

DO NOT use your rooftop tent or annexe if there is visible damage to any part, including components - Especially ladder locking straps and buckles. Please contact Customer Service and see how we can help.

Always use caution on the Cross 1200 ladder when climbing in or out. **NEVER** allow children to use it alone.

INSPECTIONS

All bolts and fixings associated with the installation of a rooftop tent to mounting brackets **MUST BE** secure and not loose prior to installation or after use.

Regularly check all fasteners and fittings in your rooftop tent and mounting system are tight, and in good repair. This includes hinges, ladder and mounting track. Prolonged use on rough and corrugated terrain will require more regular inspections.

SAFETY WARNING

- KEEP ALL FLAME AND HEAT SOURCES AWAY FROM TENT MATERIALS. UNDER NO CIRCUMSTANCE SHOULD ANY NAKED FLAME SOURCES OR HEATING DEVICES BE USED INSIDE OR NEAR THE TENT OR ANNEXE.
- DO NOT USE ANY FUEL BURNING DEVICE INSIDE A TENT OR ANNEXE. ALWAYS KEEP ALL EXITS CLEAR.

Notes and Parts

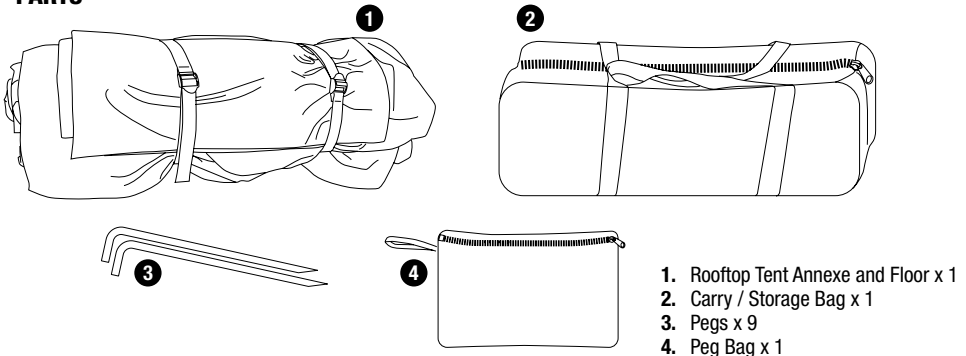
NOTES

- Be aware of change in vehicle height (side-wind sensitivity, cornering and braking). Dependent on roof bars, the vehicle height can increase by up to 90cm, be aware of low entrances or hanging branches, etc.
- For your safety and protection, ensure the correct placement and angle of the ladder. **DO NOT CLIMB ON LADDER UNTIL CORRECT ANGLE IS ACHIEVED** (approx. 60° between ladder and ground). If the angle of the ladder is at 90° and/ or does not reach the ground, you will need a ladder extension or longer extendible ladder.
- Wind noise may be generated when traveling with a rooftop tent.
- When using an automatic carwash facility, your rooftop tent must be removed first.
- For better fuel economy and safety of other road users, your rooftop tent should be removed when not in use.
- In order to avoid generating excessive lifting forces, your rooftop tent should be mounted parallel to the line of the road and not at an angle.

CLEANING AND STORAGE

- Use cold water with a soft bristle brush, **DO NOT** use soaps, bleaches, or any other abrasive cleaners as this may result in damage to the fabric.
- Avoid storing your rooftop tent and annexe when wet or damp. If conditions dictate that you have to, open and dry out as soon as possible to avoid moisture damage.

PARTS

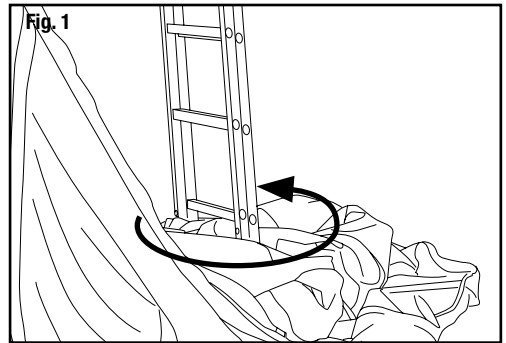


Installing to Your Rooftop Tent

Before commencing, set up your rooftop tent following the instructions found online at the Ironman 4x4 website. You can access these via the QR code found on the product label the rooftop tent came in.

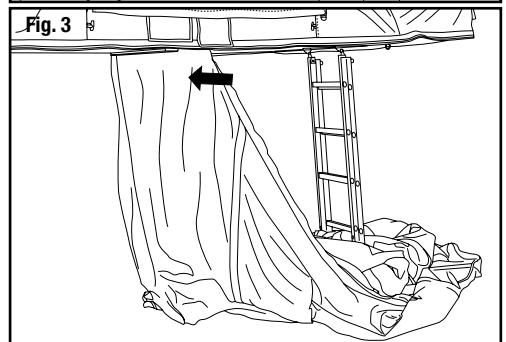
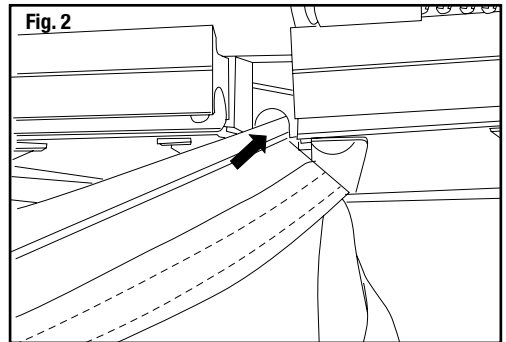
Step 1:

Layout the annexe below the rooftop tent with the sail track rolled material positioned at the vehicle side. Ensure the ladder is positioned inside the perimeter of the annexe (**Fig. 1**).



Step 2:

Slide the keder strip into the sail track (**Fig. 2**) and pull through to the other side of the channel (**Fig. 3**).



Installing to Your Rooftop Tent

Step 3:

Locate the zipper ends and join together (Fig. 4).

Slowly and carefully work your way around the base of the rooftop tent, attaching the base to the lower part of the rooftop tent (Fig. 5).

Ensure you are careful not to catch the annexe or rooftop tent material in the zip as this may damage the material, voiding your warranty.

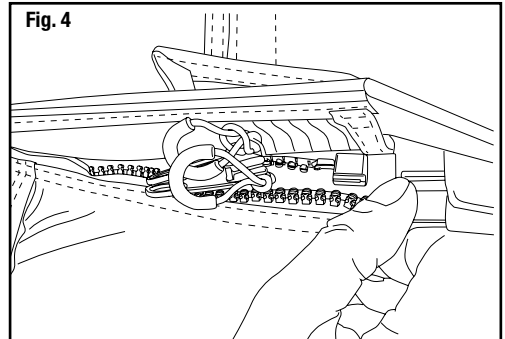


Fig. 4

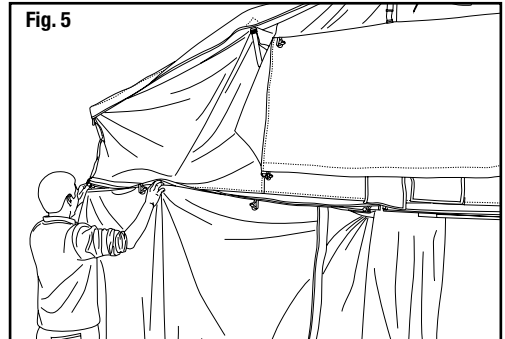


Fig. 5

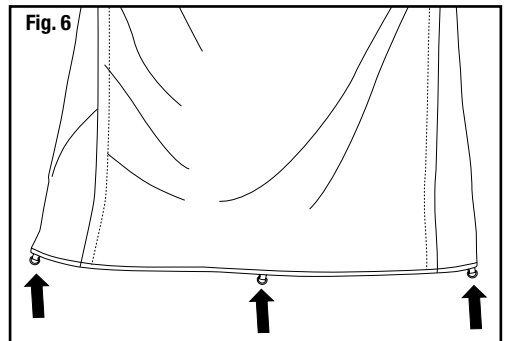
Step 4:

Once annexe is securely attached to the base of the rooftop tent, evenly spread out the base square and straight.

If required, layout and install the annexe floor. Attach to the base of the annexe using the Velcro® or zipper attachment method with your product.

Commencing at one corner, pull it tight and secure in place using peg supplied. Repeat at each corner.

Once corners are fixed in place, complete securing the rest of the peg rings down with remaining pegs (Fig. 6).



Installing to Your Rooftop Tent

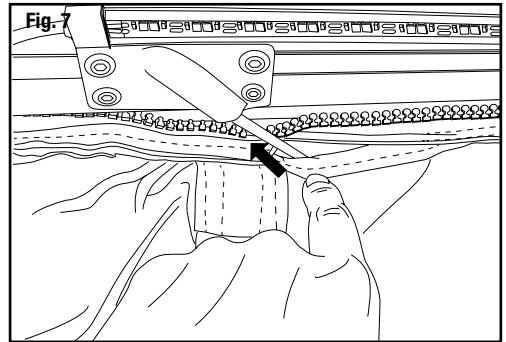
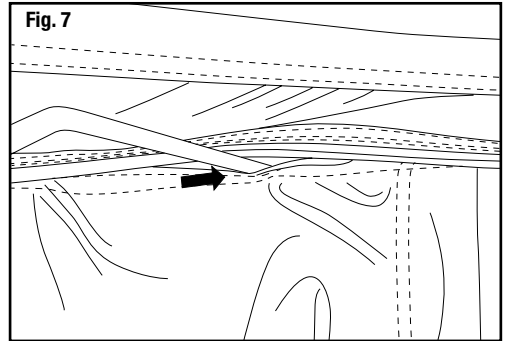
Step 5:

Once annexe is secured, locate the awning stay gap between the annexe and rooftop tent. These are located on each side of the annexe, just below the zip.

Carefully slide the rooftop tent awning stay rod through the purpose made gap (Fig. 7).

Fit the awning stay rod into the stay bracket located on the underside of the rooftop tent (Fig. 8).

Attach the other end of the awning stay rod to the rooftop tent awning as per the set up instructions for your rooftop tent.



Packing up Your Annexe

If time permits, allow the annexe material to fully dry out before packing away. If this is not possible, we strongly suggest setting the annexe up again to thoroughly dry out before any long-term storage to prevent damage to the material and mechanisms.

Remove rooftop tent awning stays from the underside brackets. Remove all pegs and store in carry bag.

Carefully unzip the annexe from the base of the rooftop tent, ensuring not to snag the material. Slide the rolled material strip out of the sail track channel.

Lay annexe out on the ground and fold up. Store away in protective carry bag with pegs.

Packing up Your Tent

If time permits, allow the tent material to fully dry out before packing away. If this is not possible, we strongly suggest setting the tent up again to thoroughly dry out before any long-term storage to prevent damage to the material and mechanisms.

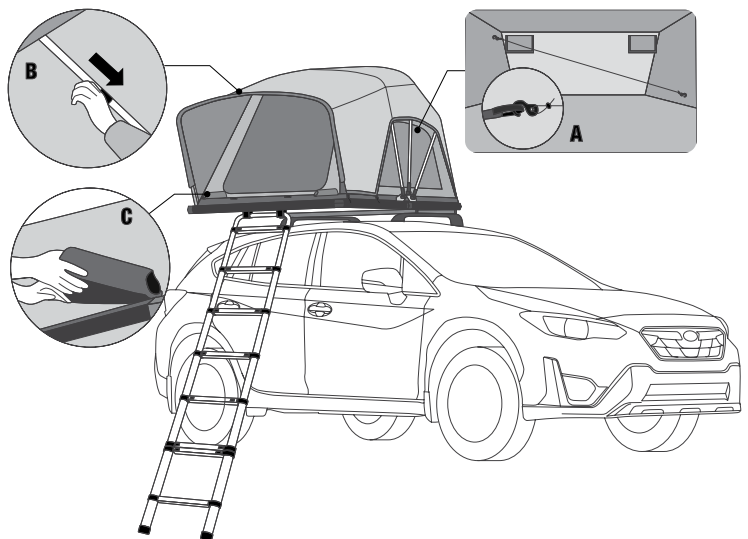
Remove all bedding and any other articles from inside the tent.

Attach the bungee cords **(A)** to the loops inside the tent. This will assist pulling the fabric into the tent when closing.

Remove and store the awning roof pole **(B)** and boot bags **(C)** inside the tent.

Zip up the door and windows two thirds of the way. Ensure the door is not fully closed as this allows for trapped air within the tent to escape as you close it over.

To close up and secure your tent, please refer to the rooftop tent instructions.



WARRANTY

The offered 3 year warranty is limited to manufacturing and material defects. Not including; damage caused by misuse or abuse, wear and tear, condensation, extreme weather, accidents, incorrect set up, damage caused by being stored whilst damp. It also excludes broken poles and damage caused by a jammed, snagged zipper or excessive force applied to a zipper, causing failure.



This product is not designed to be used as a permanent shelter or used in commercial applications. As such, any claims for warranty may be reviewed subject to the conditions of use and appearance when presented.

IMPORTANT INFORMATION

Ironman 4x4 is not liable for any or accident that may occur as a result of non-compliance with these instructions, modifications made to any part, or the use of any parts other than manufacturer original parts.

The warnings, cautions and instructions for use contained in this document cannot cover every possible situation, so it is understood by the operator that common sense and caution must be applied. It is your responsibility to pass these instructions on to any third party who uses this product, including second-hand sales.