



INSTALLATION GUIDE

BBT004/ BBC004/ BBBCD004 TO SUIT TOYOTA LANDCRUISER 80 SERIES



- Ironman 4x4 BBT/ BBC/ BBBCD004 Bull Bars to suit a Toyota Landcruiser 80 Series.
- It will take about 2 hours to install.

NOTE: This product has been tested for air bag compatibility and therefore the mounting system **MUST NOT** be modified

IMPORTANT: Bull Bar installations should only be done by a qualified person and it is the responsibility of this person to ensure correct fitment.

1. Before installation check bull bar application is compatible with your vehicle.

2. Remove front bumper.



3. Remove recovery hooks.



4. Fit chassis bracket to chassis and secure using hardware provided.



5. Refit recovery hooks using bolts supplied.



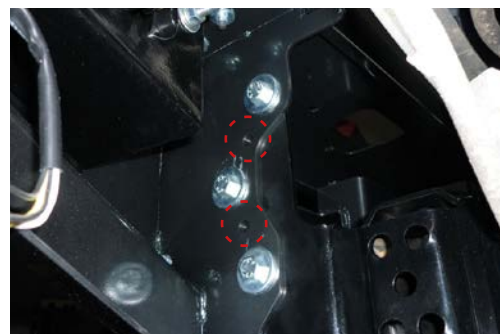
6. If winch is being installed refer to winch installation instructions pages 4 - 5.

7. Unwrap bull bar. Check over riders and light assemblies are tight in bull bar before installation.

8. Fit bull bar to chassis bracket using M12 bolts, flat washers, spring washers and nuts provided.

9. Align bull bar with vehicle and tighten all bolts.

10. Once bar is aligned with vehicle and tightened, drill through pinning holes between bull bar and chassis brackets. Secure with hardware provided.



11. Fit protection plate to underneath of bull bar using M8 bolts, spring washers and flat washers provided.



12. Connect park lights and indicators as per wiring diagram on page 6.

Winch Installation

1. Bolt winch to cradle with gearbox to the left hand side of vehicle and cable spooling from bottom of the cable drum using bolts and washers provided.



2. Bolt fairlead to recess in front of bull bar using bolts, washers and nuts provided.



3. Fit bull bar to vehicle referring to steps of bull bar fitting instructions.

4. Mount control box in desired location.



5. Connect three colour coded cables to the corresponding poles on winch motor.



6. Connect the thin black earth wire and negative battery cable to the earth connection on the opposite side of winch motor.



7. Run the positive and negative battery cables into the engine bay taking care to secure cables away from any sharp or moving objects.

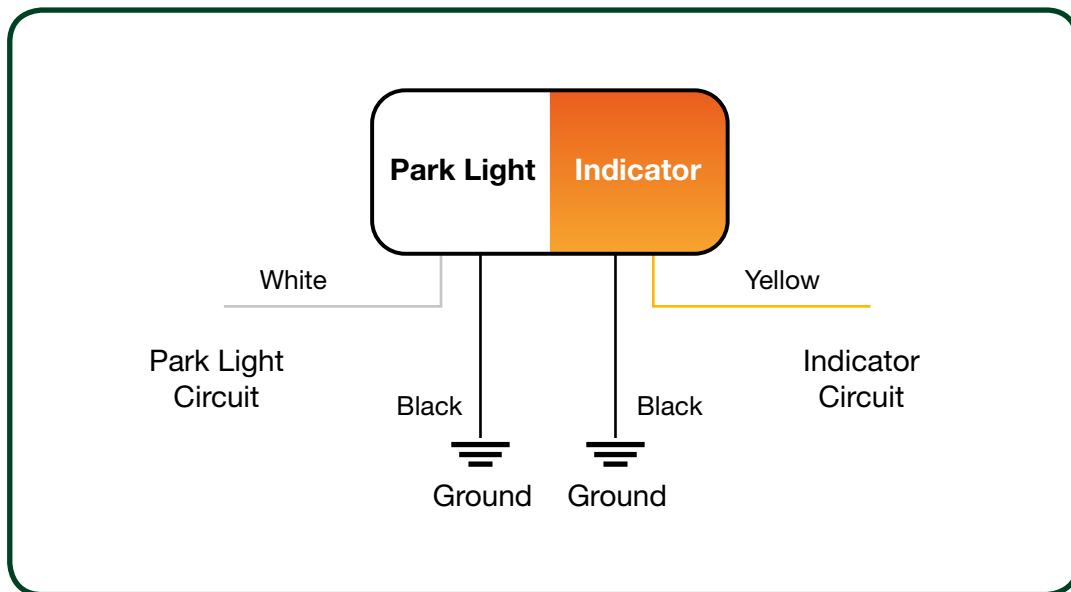
8. Connect positive and negative battery cables main battery of vehicle (Not Auxilliary Battery).

9. Attach breather hose to barb fitting on winch motor. Run hose to the highest available point in engine bay and cable tie in position. Cable tie hose away from any sharp, hot or moving objects.



Wiring Diagrams

PARK LIGHT & INDICATOR



FOG LIGHTS

